



ROYAL GARDEN HOTEL

LONDON

MASTER SUITES

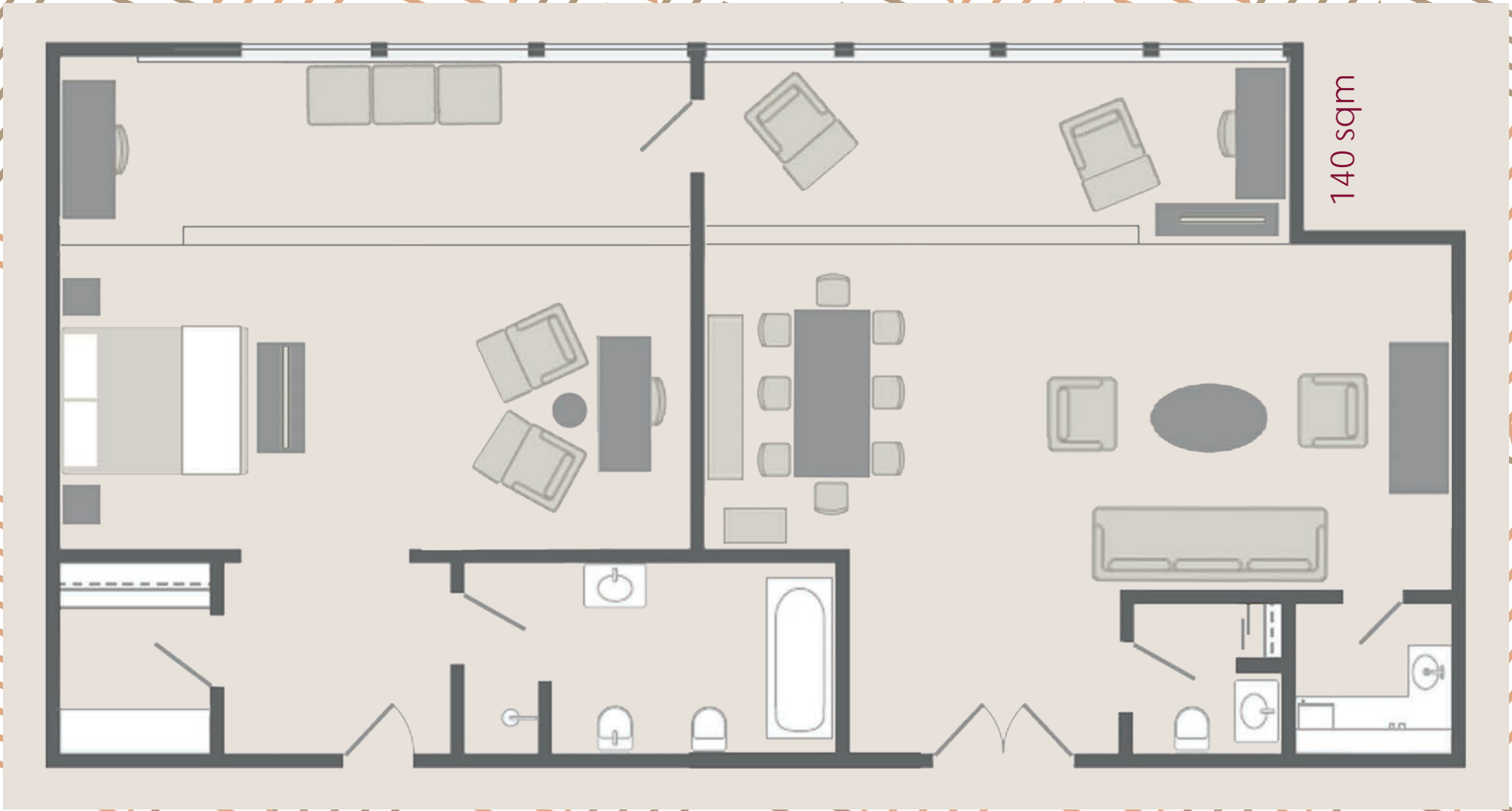




ROYAL SUITE

The one bedroom Royal Suite, located on the 10th floor adjacent to the Penthouse Suite, offers spectacular views over Kensington Gardens and London beyond. This spacious suite, boasts a walk-in closet, ideal for long stays, and a separate living area with kitchenette and dining area for entertaining.





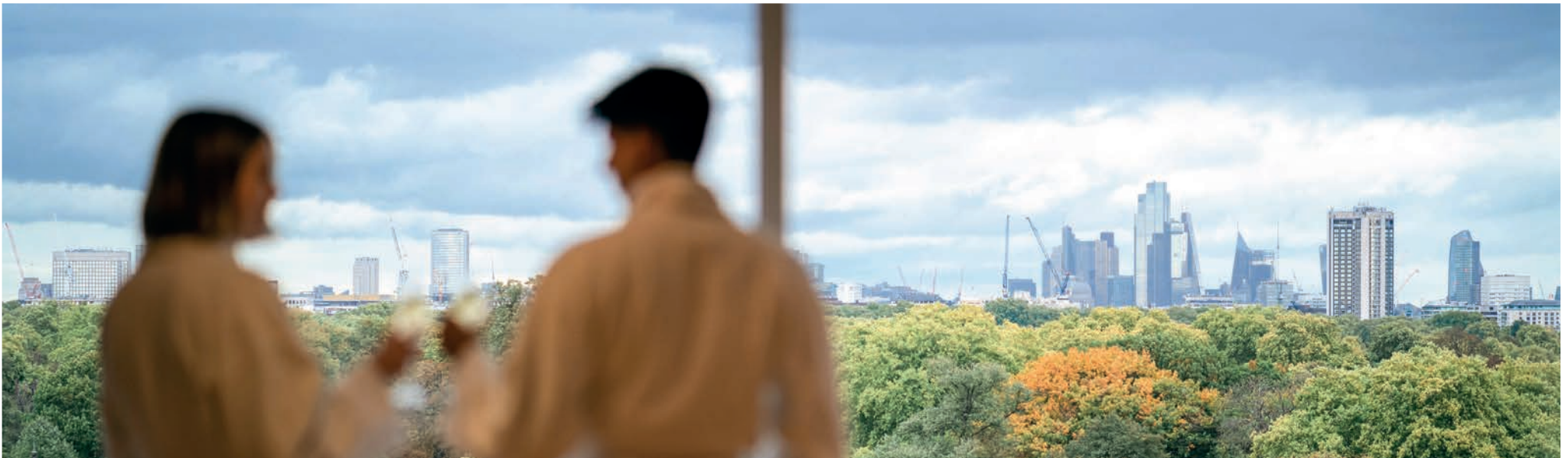
140 sqm

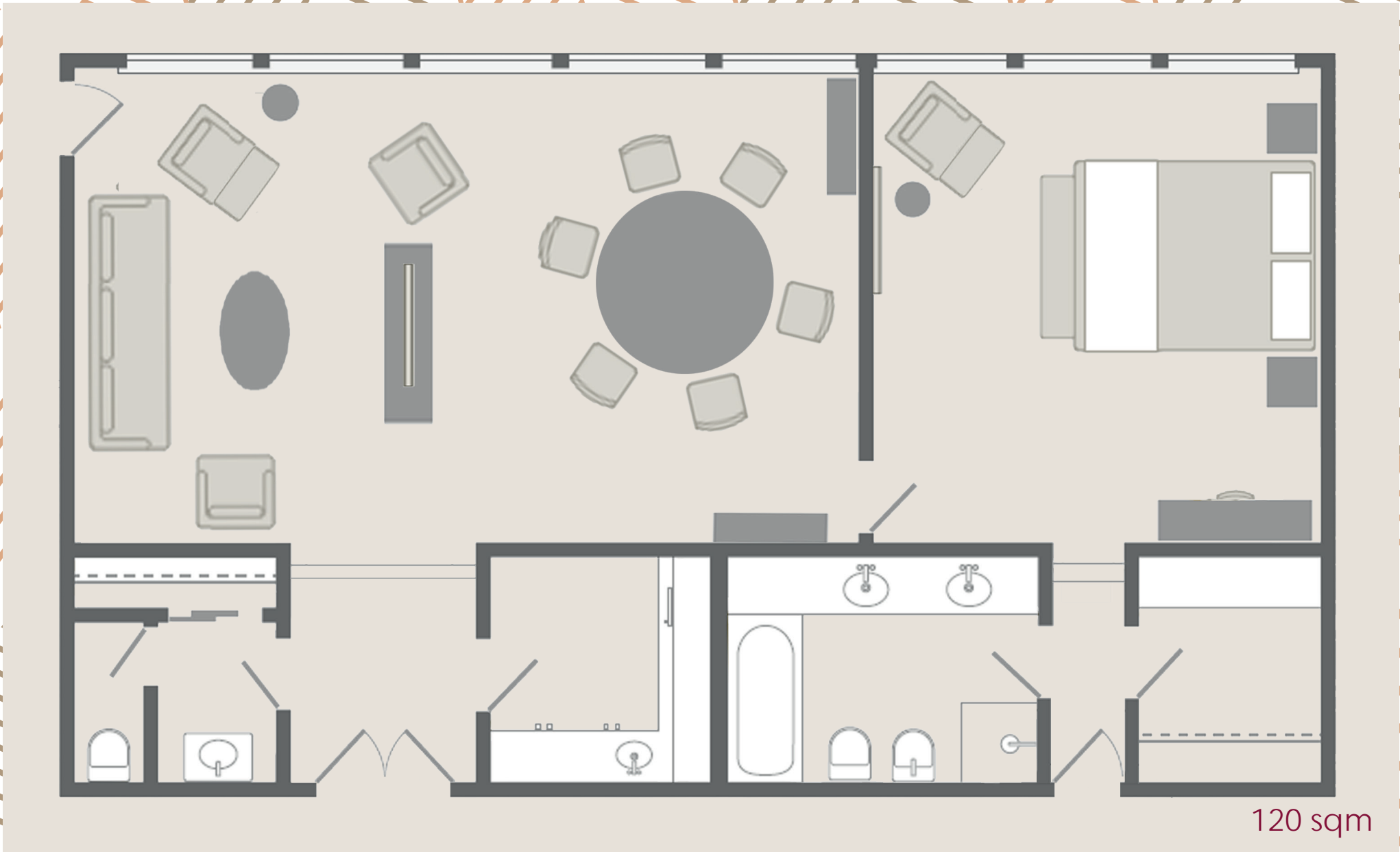


GARDEN SUITE

With stunning views of Kensington Gardens and Hyde Park, this seventh floor Master Suite can be booked as a one, two or three bedroom suite.

Perfect for long stays, the Garden Suite comprises of an independent, spacious lounge area, an oversized walk-in dressing room and a luxurious bathroom.





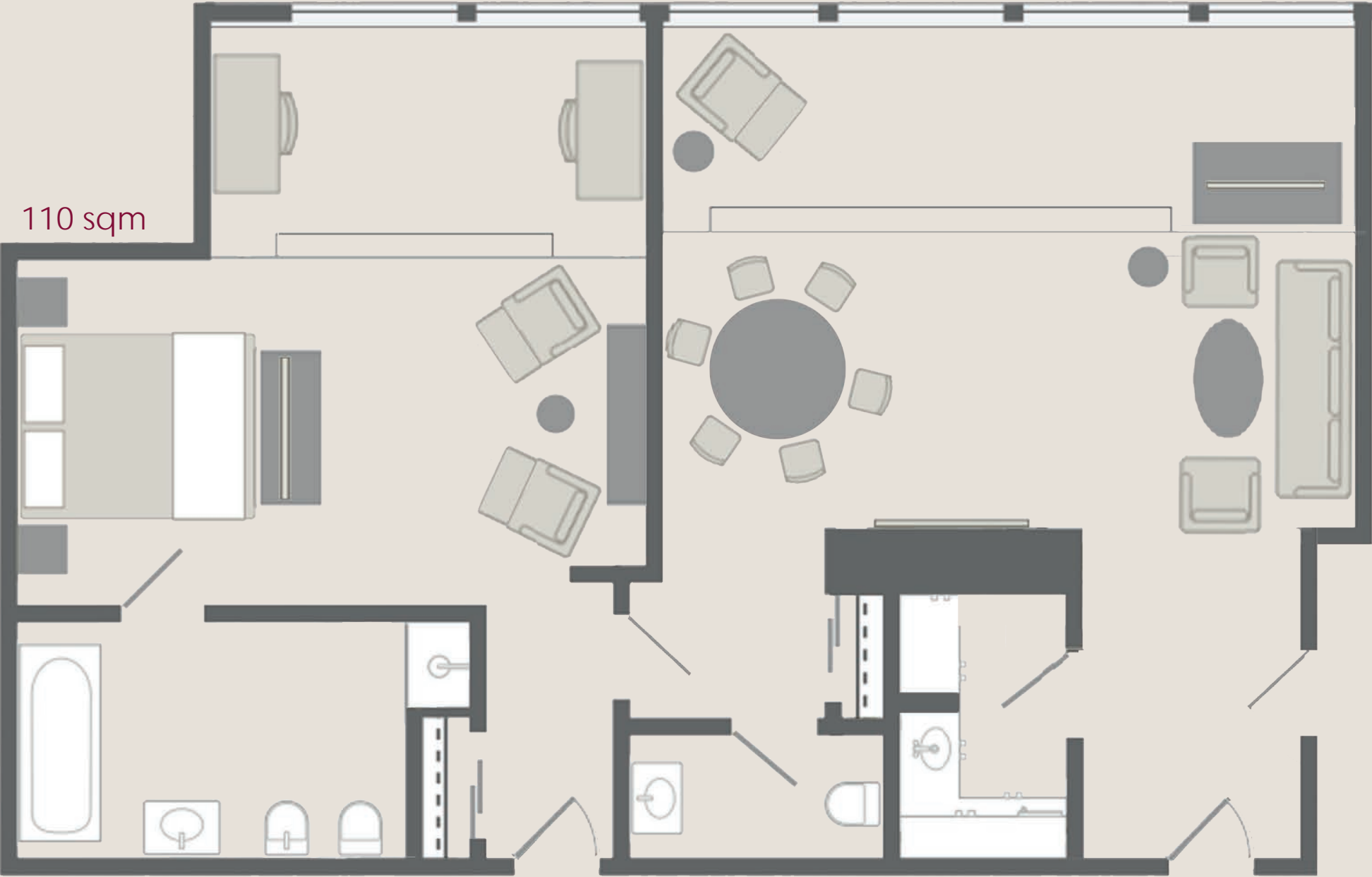
120 sqm



PENTHOUSE SUITE

This contemporary Master Suite, with iconic Kensington High Street views from the 10th floor, can be booked either as a one or two bedroom suite. The modern Penthouse Suite comprises of a large independent lounge with dining area and kitchenette to make for a comfortable stay.

110 sqm



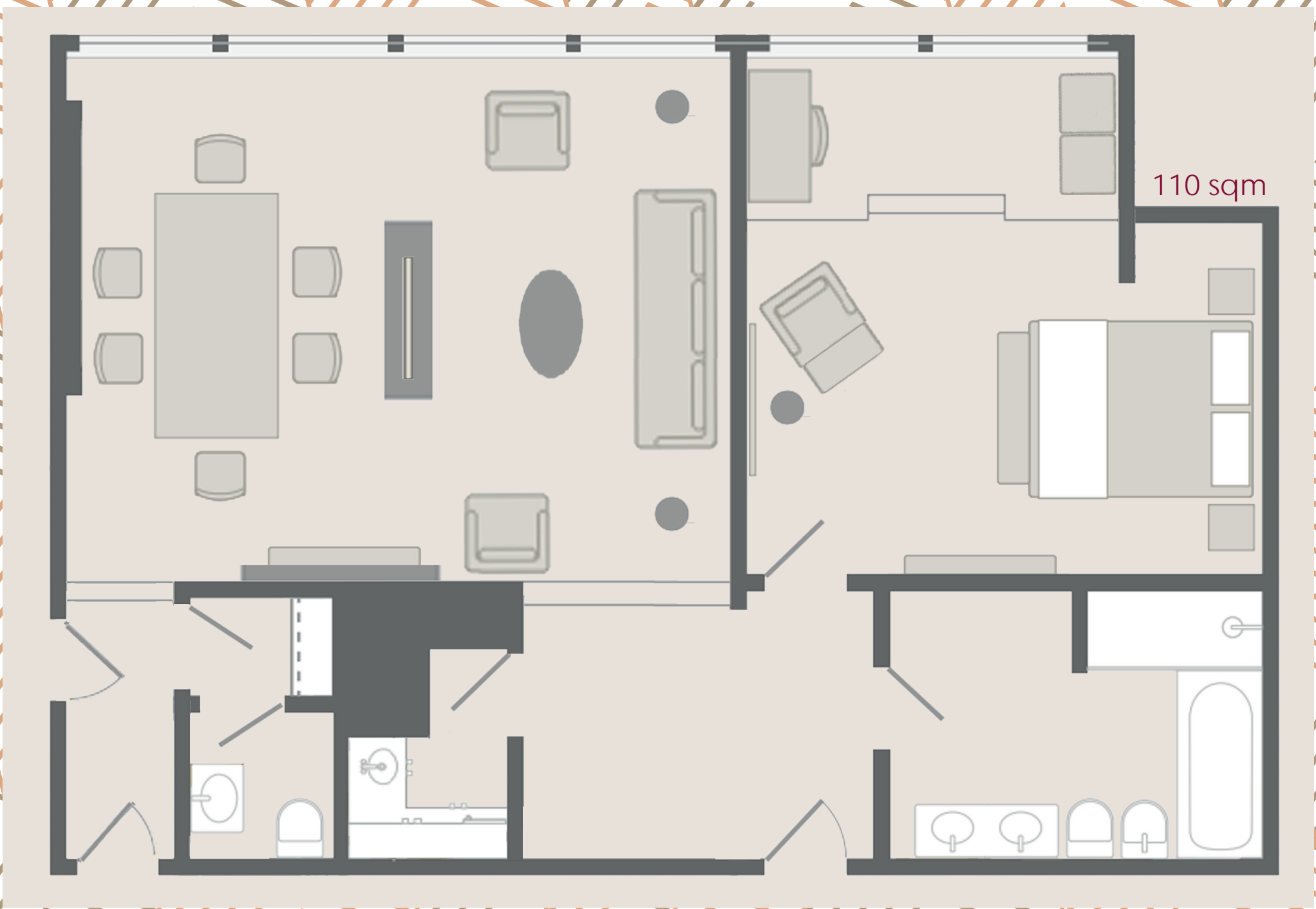


GOODWOOD SUITE

Overlooking Kensington Gardens and Kensington High Street, this one bedroom stylish suite features an intimate living and dining area with kitchenette to make for a restful stay.

Located on the eighth floor, the Goodwood Suite can also transform into a spacious two bedroom suite for added space.

110 sqm

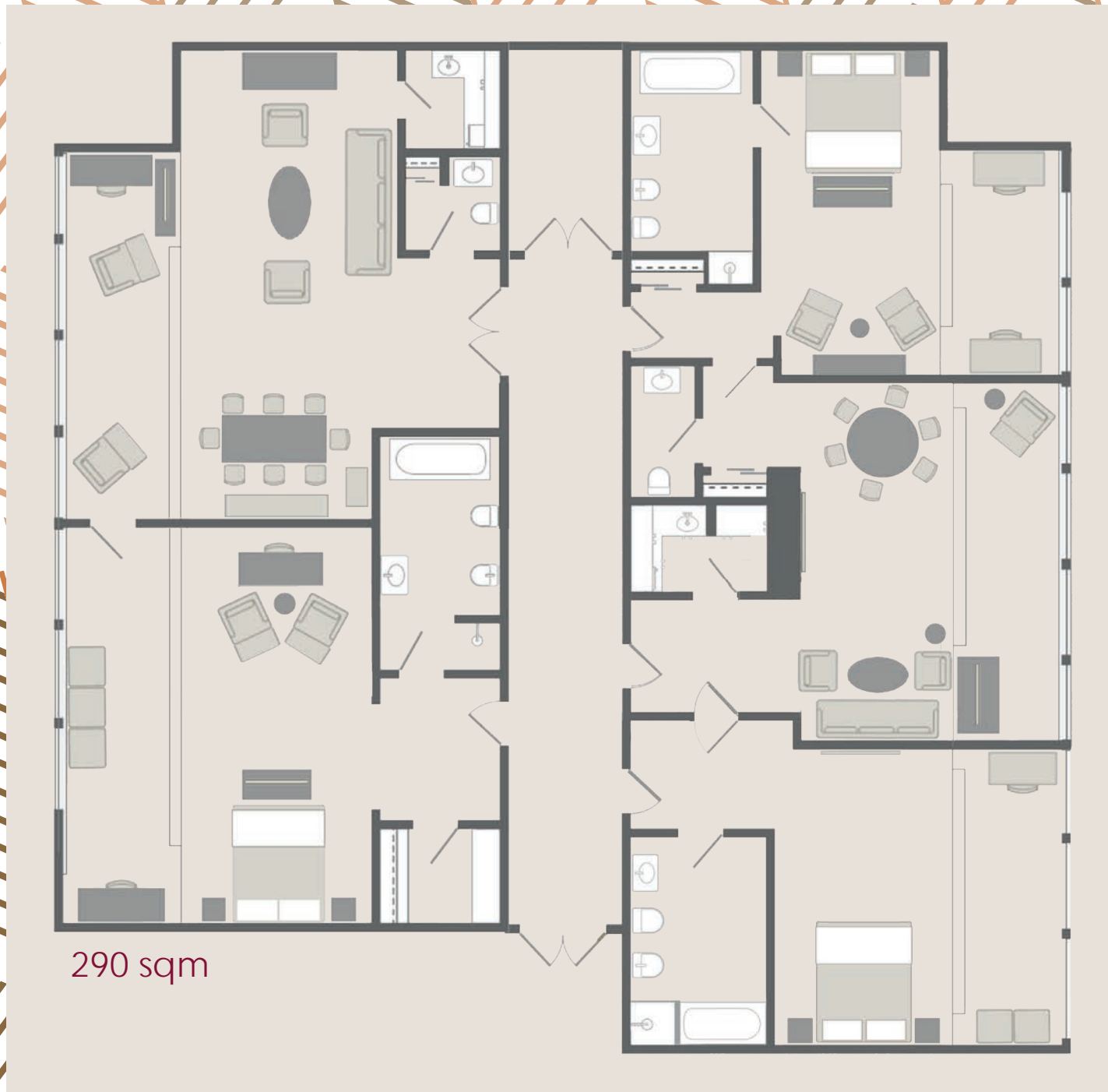




ULTIMATE SUITE

The impressive Penthouse and Royal Suites can be conveniently joined together to create a large and exclusive space on the 10th floor. Located opposite each other, there is a private entrance and corridor for extra privacy and the additional benefit of having a spacious King Room connecting to the Penthouse Suite, turning this already impressive area into a three bedroom, two living room suite.





290 sqm





ROYAL GARDEN HOTEL

LONDON



KENSINGTON



KENSINGTON PALACE
& GARDENS



ROYAL ALBERT
HALL



HYDE PARK



KNIGHTSBRIDGE



WEST END

2- 24 Kensington High Street,
London, W8 4PT

T +44 (0)20 7937 8000

royalgardenhotel.co.uk

